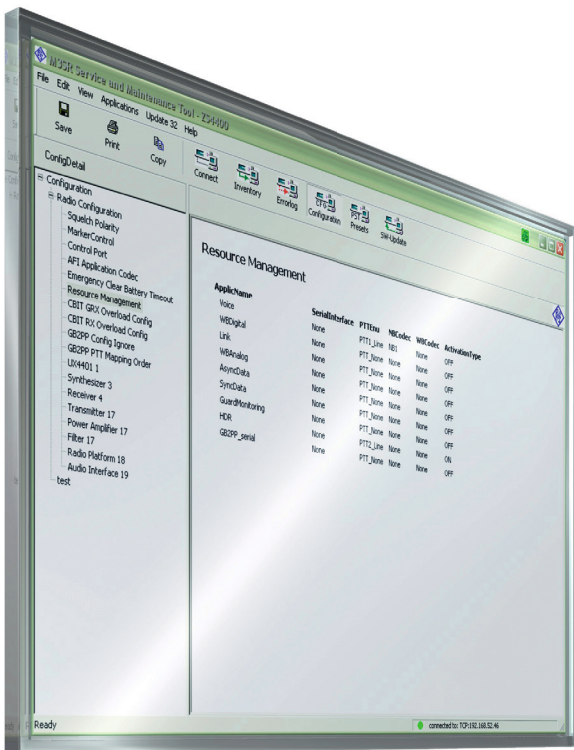


R&S®M3SR ZS4400

Service and Maintenance Tool

For R&S®M3SR Series4400 software defined radios



R&S®M3SR ZS4400 Service and Maintenance Tool At a glance

The R&S®ZS4400 service and maintenance tool makes it possible to determine and log all essential features and configurations of an R&S®M3SR Series4400 software defined radio as well as of the R&S®GB4000C remote control unit.

The R&S®ZS4400 service and maintenance tool is used for the highly modular R&S®M3SR Series4400 software defined radio, which is deployed in air defense, navy and civil air traffic control missions.

The convenient GUI of the R&S®ZS4400 gives the user the identification of the addressed radio immediately after link setup. A standard Ethernet port connects the R&S®ZS4400 to the R&S®M3SR Series4400 or to a local area network (LAN).

The tool allows uploaded radio configurations to be downloaded to other radios. This procedure is called cloning and makes it possible to log and distribute the radio configuration, for example at selected sites or after servicing has been performed.

In addition, the R&S®ZS4400 allows software updates to be downloaded to R&S®M3SR Series4400 radios. The radio configuration parameters (such as the set transmit power) are password-protected. To modify radio parameters, the correct password must be entered first. This prevents inadvertent or unauthorized access, resulting in enhanced security.

Moreover, the R&S®ZS4400 can be used to read out and log the activated device options.



Key facts

- Customized directories: for user-defined directory structure and management
- Radio configuration and cloning: for saving user-selected device configurations and loading this information onto other radio units to ensure identical configurations
- Error log, device inventory, radio options: device information that can be saved and printed for status freezes and system configuration
- Preset pages: download/upload of preset pages for distribution purposes
- Radio software update: automatic comparison of a software release already loaded and a CD-based one; for performing software updates

System requirements

- Min. 400 Mbyte free space on hard disk drive, CD-ROM drive, Ethernet port
- Windows XP/7 operating system

Detailed radio inventory.

Type	Name	Identno./Var	Serial no.	Version	Production date
DEV	XT4410L	6102.0007.01	100034.000	25.00	2009/01/21
SWMNO	DS400L PACK	6102.2168.00	000000.000	01.00	2009/12/01
SW	BOOTPROG	6102.5521.02	000000.000	12.04	2007/09/21
SW	PLATFORM	6102.5607.02	000000.000	01.01	2009/12/01
HW	KR400 BASIS	6102.5009.04	101389.000	23.00	2009/01/21
FW	ESP KR400	6102.5644.02	000000.000	03.62	2007/12/13
FW	DSP KR400	6102.8950.02	000000.000	01.02	2008/06/09
HW	ESP MODULE	6102.8615.03	106154.000	01.11	2008/06/09
FW	ACPB vs EQ	6102.6412.06	000000.000	01.27	2002/02/04
HW	FRONT PANEL B	6102.6406.03	102459.000	04.09	2008/10/14
FW	CDL KR400	6102.7608.02	000000.000	01.01	2007/12/20
HW	PLATFORM	6102.5300.06	100074.000	07.07	2008/10/27
FW	NE FRSA1 L11	6102.7657.02	000000.000	01.05	2008/07/07
FW	NE FRGA2	6102.7640.02	000000.000	01.03	2008/07/16
HW	RECEIVER B	6102.7601.02	102076.000	07.02	2008/11/28
HW	FLASH ET400	6102.2176.02	000000.000	01.00	2009/11/18
HW	RECEIVER B	6102.7053.02	102957.000	03.14	2008/11/28
HW	ET400G S REC	6102.8908.02	109519.000	02.03	2009/01/21
FW	FLASH ET400G	6102.2614.02	000000.000	01.21	2009/05/02
FW	GUARD REC B	6102.8950.02	109548.000	03.13	2009/01/21
HW	VCO BOARD	6102.6505.03	102326.000	16.00	2008/11/18
HW	VCO BOARD	6102.6634.02	102997.000	01.06	2008/11/18
FW	ALT GP400T	6102.6505.03	000000.000	04.82	2009/04/29
HW	SYNTHESIZER B	6102.6757.03	102508.000	01.19	2008/11/18
FW	XL GP400T	6102.6611.03	000000.000	04.82	2009/04/29
HW	ESP MODULE	6102.7901.06	100112.000	33.00	2008/10/20
FW	DSP V1400	6102.7999.02	000000.000	03.69	2009/06/04
FW	ESP CDL	6102.8950.02	000000.000	01.02	2009/10/20
HW	TRANSMITTER B	6102.1504.03	100216.000	04.14	2008/10/20

Radio event indication overview.

ErrorCode	TimeDate	ErrorLevel	RepeatCount
359	2013/09/17 14:46:26	Warning	1
362	2013/09/17 14:46:00	Warning	1

Ordering information

Designation	Type	Order No.
Service and Maintenance Tool	R&S®ZS4400	6105.2600.03

Service that adds value

- | Worldwide
- | Local and personalized
- | Customized and flexible
- | Uncompromising quality
- | Long-term dependability

About Rohde & Schwarz

Rohde & Schwarz is an independent group of companies specializing in electronics. It is a leading supplier of solutions in the fields of test and measurement, broadcasting, radiomonitoring and radiolocation, as well as secure communications. Established more than 75 years ago, Rohde & Schwarz has a global presence and a dedicated service network in over 70 countries. Company headquarters are in Munich, Germany.

Environmental commitment

- | Energy-efficient products
- | Continuous improvement in environmental sustainability
- | ISO 14001-certified environmental management system

Certified Quality System
ISO 9001

Certified Quality System
AQAP-2110

Rohde & Schwarz GmbH & Co. KG

www.rohde-schwarz.com

Regional contact

- | Europe, Africa, Middle East | +49 89 4129 12345
customersupport@rohde-schwarz.com
- | North America | 1 888 TEST RSA (1 888 837 87 72)
customer.support@rsa.rohde-schwarz.com
- | Latin America | +1 410 910 79 88
customersupport.la@rohde-schwarz.com
- | Asia/Pacific | +65 65 13 04 88
customersupport.asia@rohde-schwarz.com
- | China | +86 800 810 8228/+86 400 650 5896
customersupport.china@rohde-schwarz.com

R&S® is a registered trademark of Rohde & Schwarz GmbH & Co. KG

Trade names are trademarks of the owners

PD 5213.7425.12 | Version 03.00 | October 2013 (sk)

R&S®M3SRZS4400

Data without tolerance limits is not binding | Subject to change

© 2009 - 2013 Rohde & Schwarz GmbH & Co. KG | 81671 München, Germany



5213742512